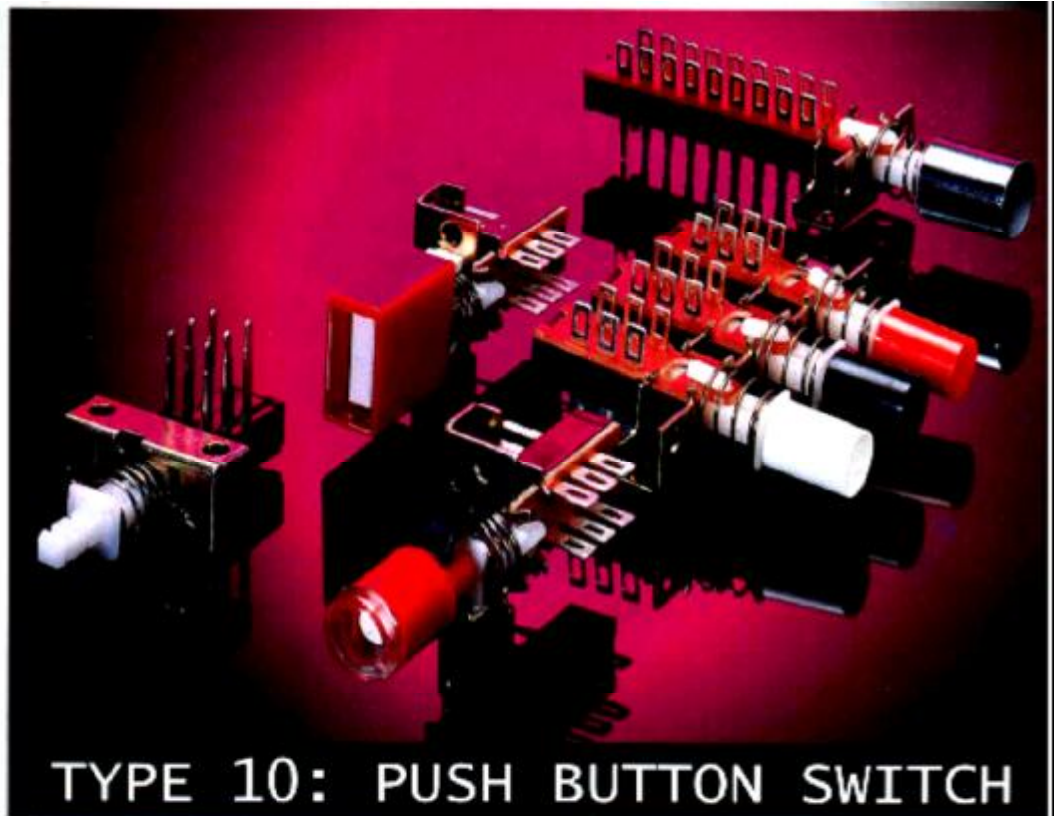


PUSH BUTTON SWITCHES FOR MODERN ELECTRONIC APPLICATIONS.

HIGHLY PROFESSIONAL, RELIABLE, SLEEK AND VERSATILE.

SWITCHES ARE MODULAR CONSTRUCTION AND HAVE DOUBLE THROW SWITCHING ACTION.



## TYPE 10: PUSH BUTTON SWITCH

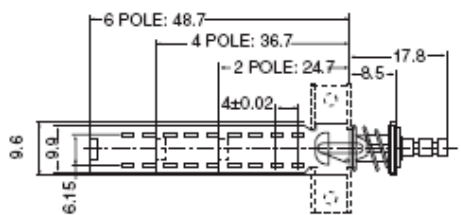
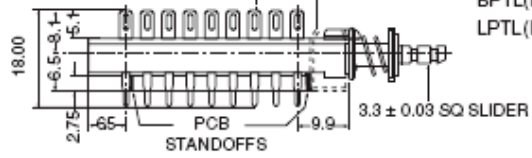
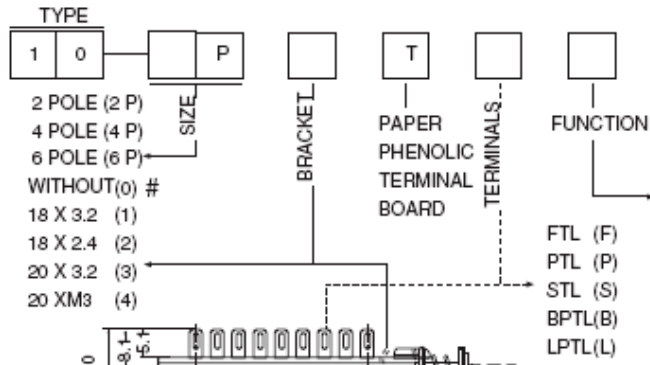
### SPECIFICATIONS:

SIZE	: 2, 4, 6 POLE, SINGLE AND CHASSIS ASSEMBLIES OF 2 TO 13 STATIONS
FUNCTION	: PUSH PUSH (PP), MOMENTARY (MC), INTERLOCKING (IL), CENTRAL RELEASE (CR)
CONTACTS	: DOUBLE THROW, NON SHORTING, BREAK BEFORE MAKE
RATING	: 1 A, 25 V DC OR 0.2 A, 230 V AC
CONTACT RESISTANCE	: 10 m $\Omega$ MAX. INITIAL, 50 m $\Omega$ MAX AFTER 25,000 CYCLES AT RATED LOAD
PROOF VOLTAGE	: 1500 V AC FOR 1 MIN. AT 50 Hz
INSULATION RESISTANCE	: $1 \times 10^{10} \Omega$
OPERATING LIFE	: 25,000 CYCLES AT RATED LOAD
STANDARD VERSION	: TERMINAL - FTL, TERMINAL BOARD - PAPAER PHENOLIC, WITH OR WITHOUT MOUNTING BRACKET - 18 X 3.2 $\emptyset$
OPTIONS	: TERMINALS - STL, PTL, BPTL, LPTL MOUNTING BRACKETS : 18 X 2.4, 20 X 3.2 $\emptyset$ , 20 X M3
KNOB COLOURS	: PLATED, BLACK, WHITE, GREY, YELLOW, GREEN, BLUE, RED

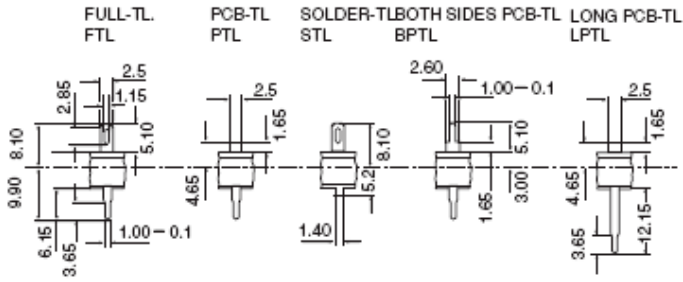


MEHTA SWITCH

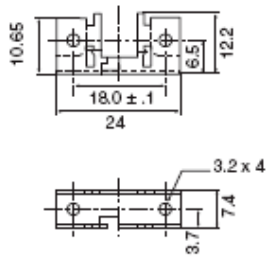
**SWITCH CODE**



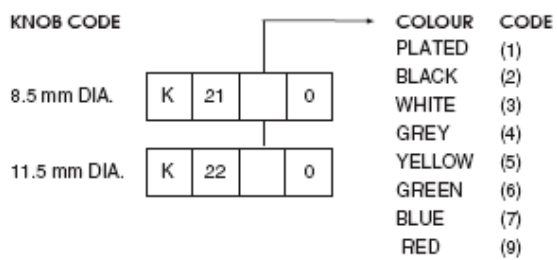
**TERMINALS**



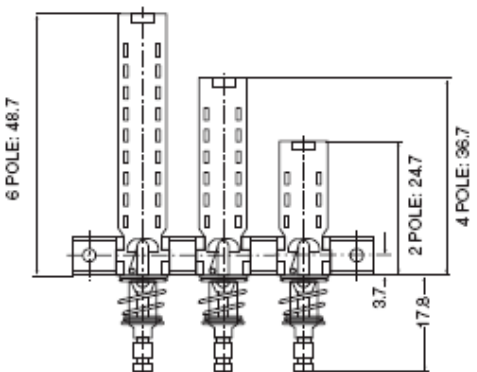
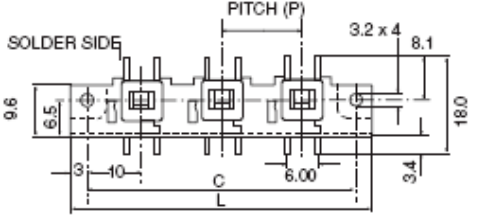
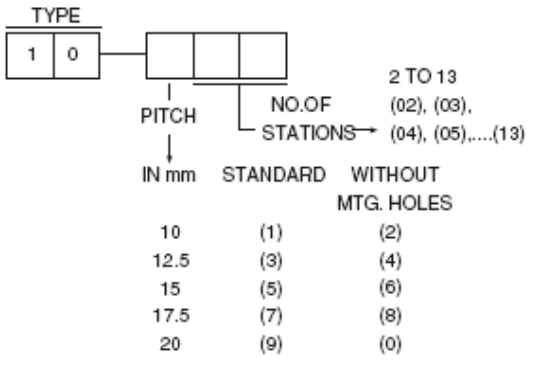
**STANDARD MOUNTING BRACKET**



**ROUND KNOBS AVAILABLE**



**CHASSIS ASSEMBLY CODE**



STATION NO. 1 2 3 up to 13  
LEFT TO RIGHT LOOKING TOWARDS BUTTON AND SWITCH WITH SOLDER SIDE UP

STATIONS PITCH (P)	C												
	2	3	4	5	6	7	8	9	10	11	12	13	
10	30	40	50	60	70	80	90	100	110	120	130	140	
12.5	32.5	45	57.5	70	82.5	95	107.5	120	132.5	-	-	-	
15	35	50	65	80	95	110	125	140	-	-	-	-	
17.5	37.5	56	72.5	90	107.5	125	142.5	-	-	-	-	-	
20	40	60	80	100	120	-	-	-	-	-	-	-	

- LONGER CHASSIS ALSO AVAILABLE
- FOR MORE THAN 1 INDEPENDENT INTERLOCKING (IL)
  - IN CASE OF 10 mm SPACING, PROVIDE 1 EMPTY STATION AFTER EACH INDEPENDENT (IL) GROUP
- WITHOUT MOUNTING BRACKETS ARE MODULES
  - CHASSIS ASSEMBLIES: BESIDES CHASSIS CODE SPECIFY REQUIRED MODULE AND KNOB CODES AT EACH STATION
  - ALL DIMENSIONS IN mm, TOLERANCE ± 0.2 mm
  - ALL CODES ARE GIVEN IN THE BRACKETS ( )