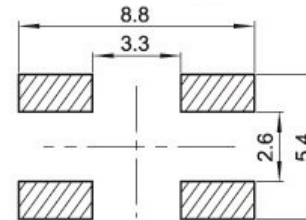
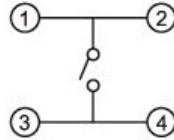
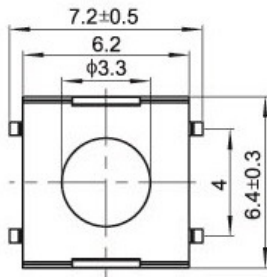
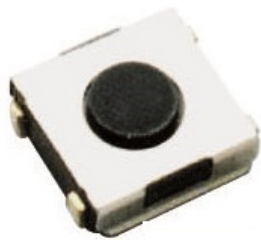


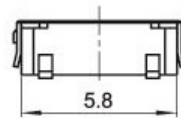
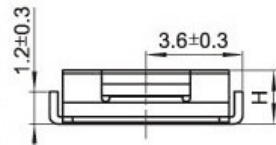
PART NUMBER: SMD-6262-01

DESCRIPTION: 6.2X6.2XHmm 6.2X6.2 SMD TACT SWITCH

ROHS COMPLIANT



H
3.1
2.5
2.0

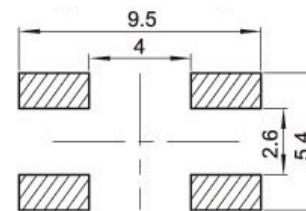
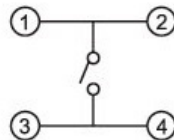
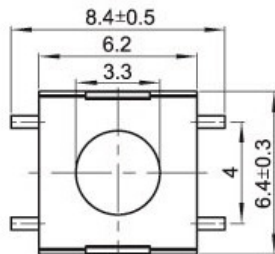
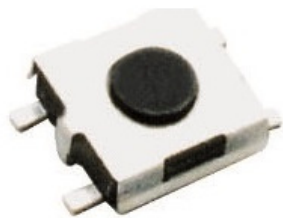


SPECIFICATIONS

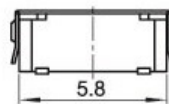
Items		Standard
Operating temperature range		-30°C to +85°C
Electrical performance	Rating	50mA, 12V DC
	Insulation resistance	100MΩ min. 100V DC
	Dielectric strength	250V AC for 1 min.
	Contact resistance	100mΩ max.
Durability	Lifetime	300,000 Cycles
Mechanical performance	Operating force	160gf 250gf
	Travel	0.25 ± 0.1mm

PART NUMBER: SMD-6262-02

DESCRIPTION: 6.2X6.2XHmm 6.2X6.2 SMD TACT SWITCH



H
3.1
2.5
2.0



Dimensional tolerance +/- 0.2mm

PRAN ELECTRONICS PVT. LTD.
INDIA.